



Power Company  
of Wyoming LLC

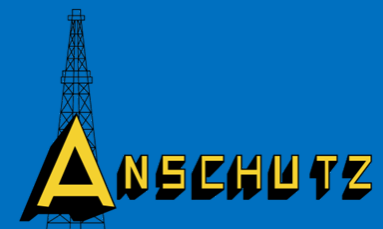


TRANSWEST  
EXPRESS LLC



# Wind Energy and Transmission for the West

The Energy Council  
Overland Park, Kansas  
June 10, 2022



## Top states for installed wind capacity, end of 2019

Rank	State	Cumulative Capacity (MW)
1	Texas	28,871
2	Iowa	10,201
3	Oklahoma	8,173
4	Kansas	6,128
5	California	5,942
6	Illinois	5,350
7	Minnesota	3,843
8	Colorado	3,762
9	North Dakota	3,628
10	Oregon	3,423
11	Washington	3,085
12	Indiana	2,317
13	Michigan	2,188
14	Nebraska	2,132
15	New York	1,987
	Rest of U.S.	14,560

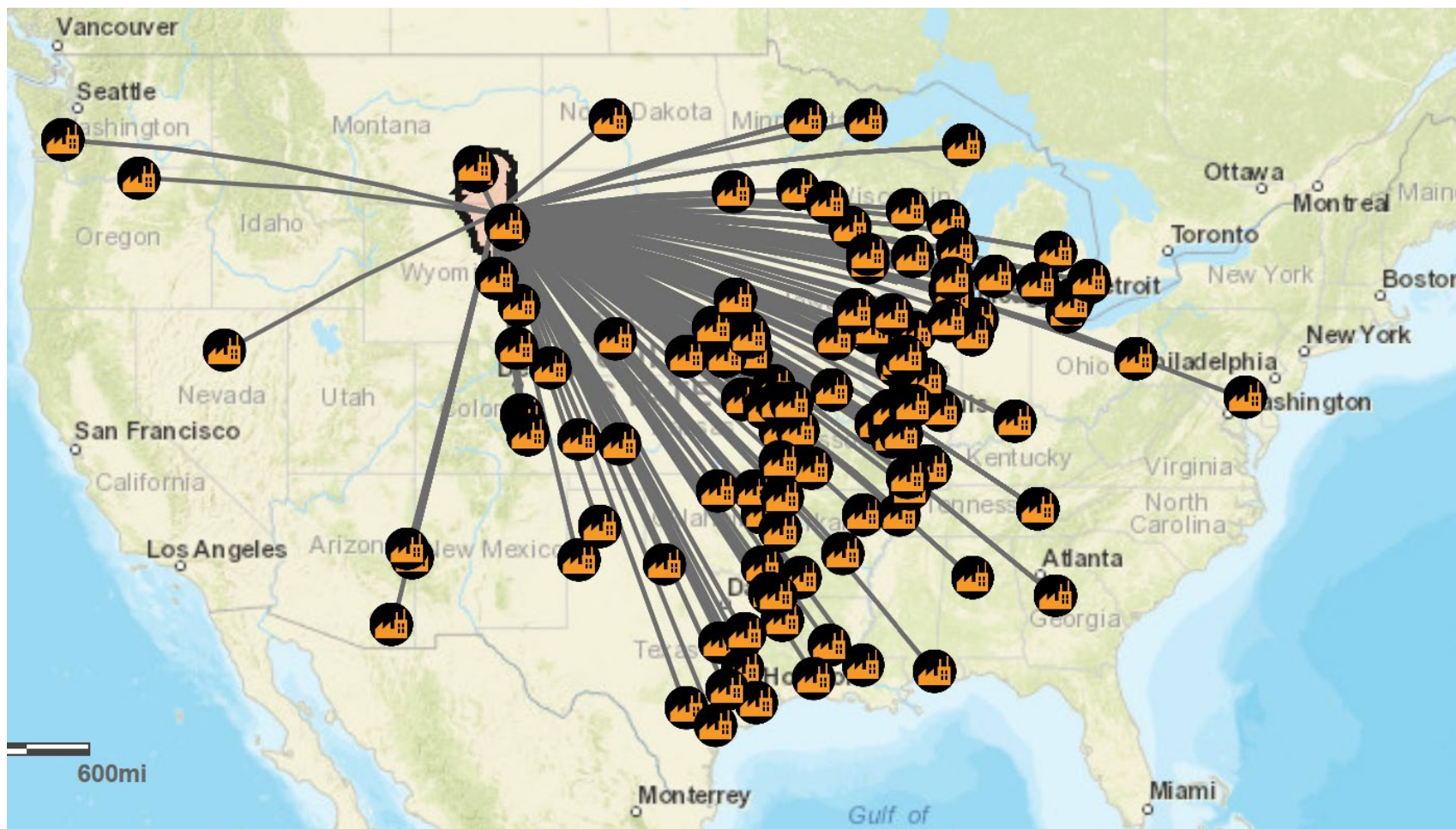
16	New Mexico	1,953
17	Wyoming	1,589
18	South Dakota	1,525
19	Pennsylvania	1,459

## Top states for installed wind capacity, end of 2021

Ranking	State	Land-based Wind (MW)
1	Texas	35,969
2	Iowa	12,219
3	Oklahoma	10,994
4	Kansas	8,245
5	Illinois	6,997
6	California	6,142
7	Colorado	5,035
8	Minnesota	4,591
9	North Dakota	4,302
10	New Mexico	4,001
11	Oregon	3,842
12	Indiana	3,468
13	Washington	3,396
14	Wyoming	3,178
15	Michigan	3,159
	Rest of U.S.	20,306

Wyoming wind capacity doubled by 2021, reflecting the first major wind power investments seen since 2010

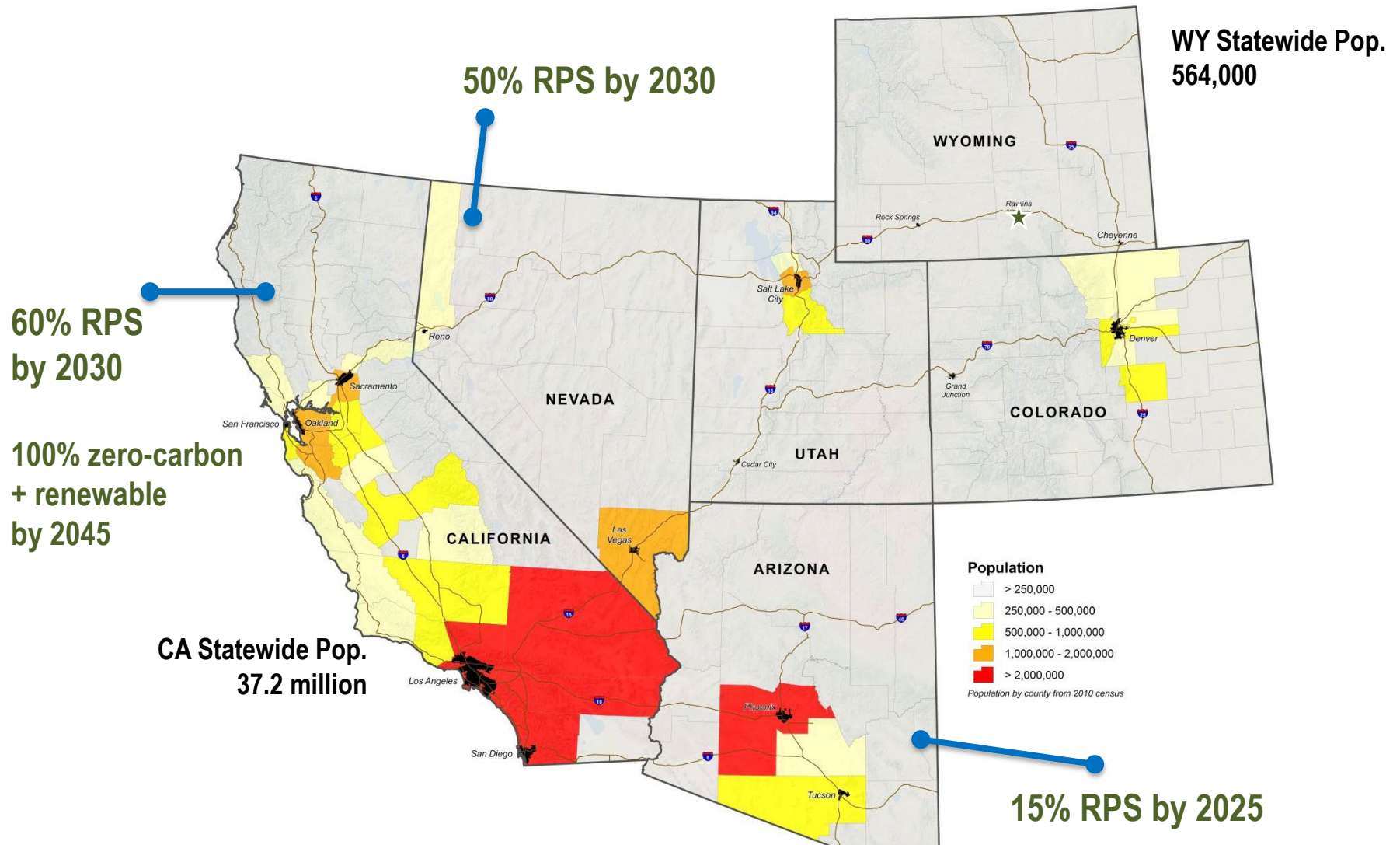
# Wyoming's Powder River Basin coal primarily delivered to eastward markets



Source: Presentation to the Wyoming Infrastructure Authority by Kara Fornstrom, Wyoming Public Service Commission, March 2019, as sourced to: <https://wildearthguardians.org/climate-energy/maps/powder-river-basin-coal-plants/>

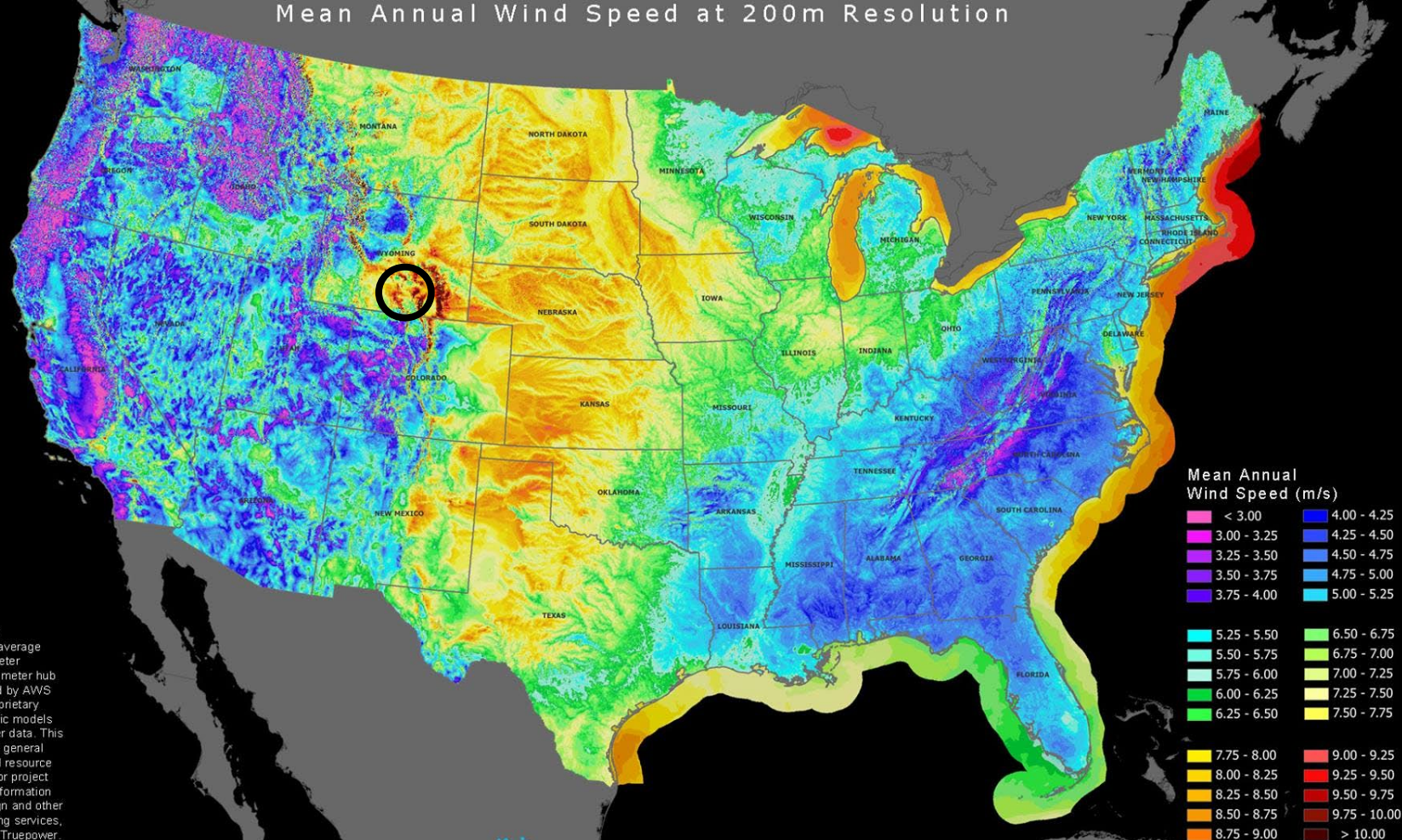


# Our energy deliveries aimed to meet demands of Southwestern renewable energy markets



# WIND RESOURCE OF THE UNITED STATES

Mean Annual Wind Speed at 200m Resolution



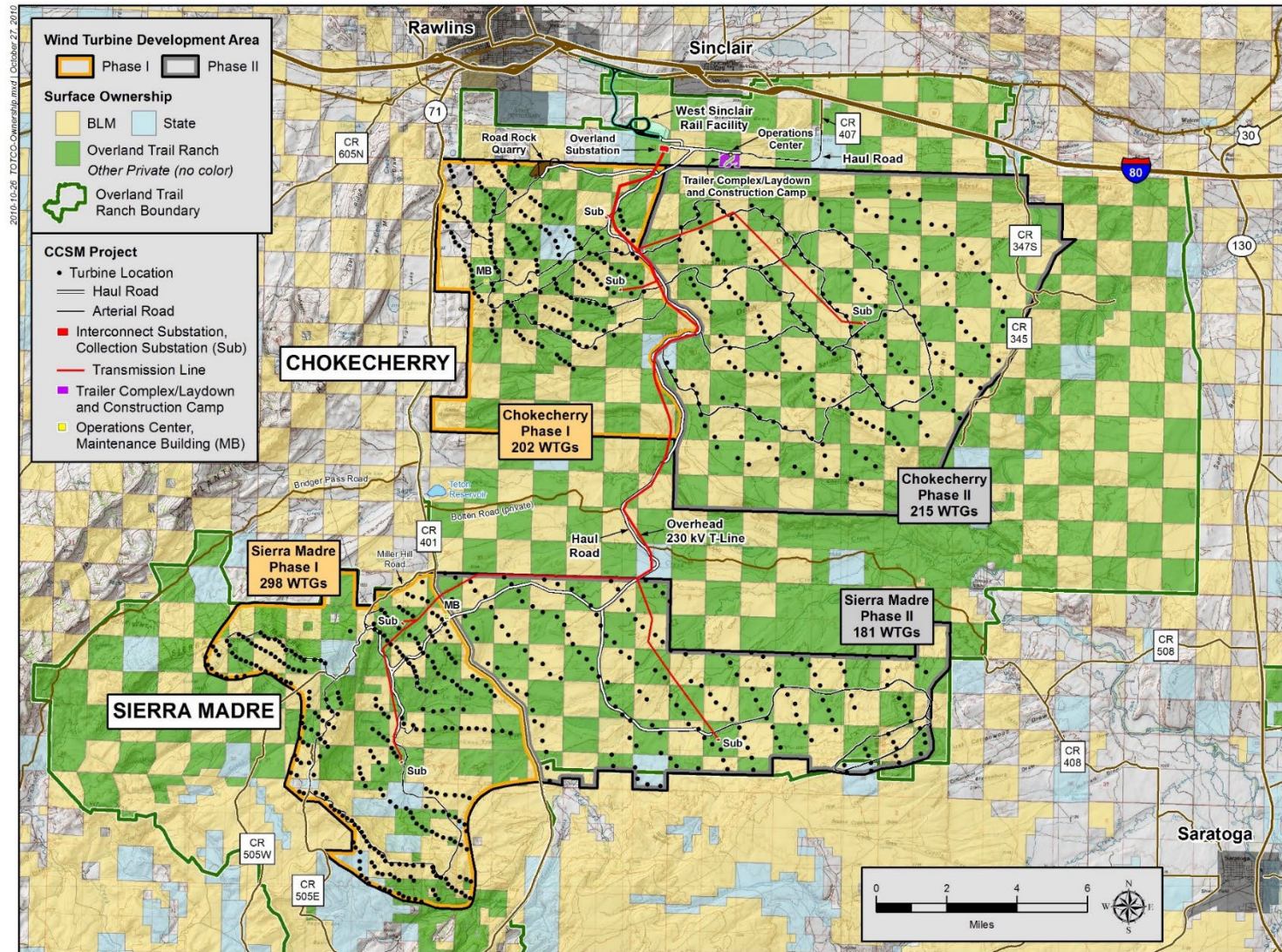
This map depicts the approximate annual average wind speed at 200 meter resolution and an 80 meter hub height. It was created by AWS Truepower using proprietary advanced atmospheric models and historical weather data. This map is provided as a general indication of the wind resource and is not intended for project design. For further information on wind project design and other wind energy consulting services, please contact AWS Truepower.



©2012 AWS Truepower, LLC. All rights reserved. This map is protected by copyright under both United States and foreign laws. All ownership rights to all content in the map are owned by AWS Truepower, LLC or its licensors.



# Power Company of Wyoming LLC: Chokecherry and Sierra Madre Wind Energy Project





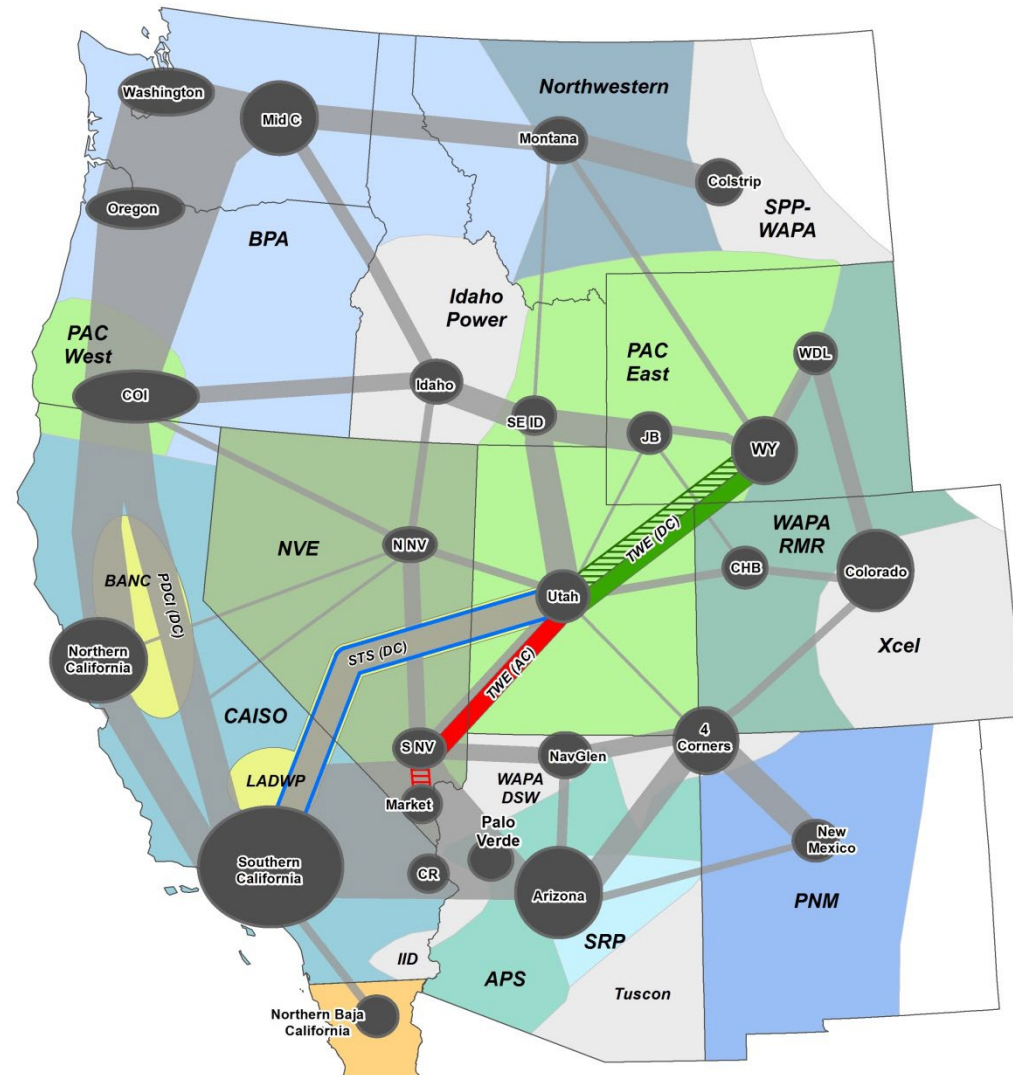
# Years of federal, state and county environmental permitting and review for the CCSM Project

- 1 BLM Environmental Impact Statement, 2008-2012
  - 4 sets of BLM site-specific environmental assessments tied to the EIS, 2013-2019
- 1 USFWS Environmental Impact Statement, 2013-2017
  - 1 additional USFWS environmental assessment, in process
- Carbon County Conditional Use Permit, 2012
- Wyoming Industrial Siting Council permit, 2014
- Every environmental resource analyzed from the soil to the sky
- Ongoing federal, state and county reporting and oversight

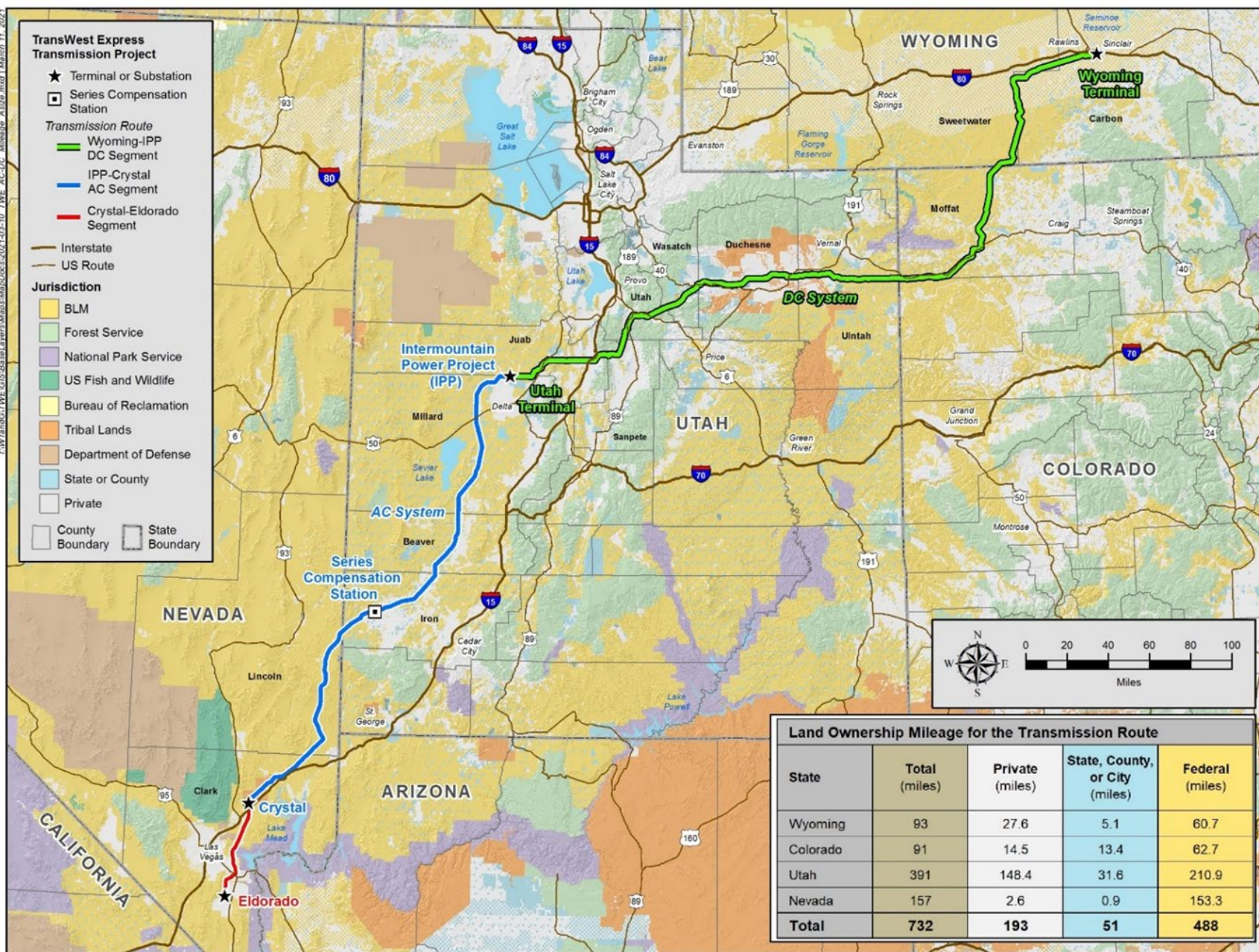


# TransWest Express LLC: TransWest Express Transmission Project

- Wyoming Terminal to Utah Terminal
  - 3,000 MW HVDC system
- Utah Terminal to Nevada
  - 1,500 MW HVAC system
- Connects the West: Adds critical new physical transmission capacity across the WECC Region









# CCSM Project and TWE Project bringing economic benefits and opportunities

- Current economic and employment benefits:
  - Direct jobs created
  - Additional demand created for local businesses offering lodging, meals, products, services
  - Tax revenues paid over construction and operation
  - Community involvement
- Future economic and employment benefits with sourcing of even more materials, services and supplies
- **New path to new Western markets for new Wyoming energy resources**

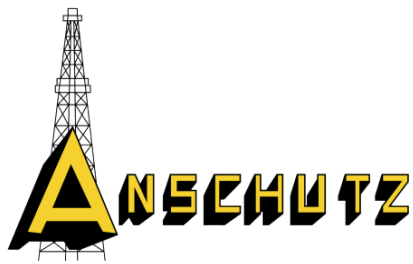






- Carbon County is the home of Wyoming's first coal town, founded in 1868; its last coal mine closed in 2000.
- In 2020, home to Wyoming's 7<sup>th</sup>-largest power plant by capacity – Ekola Flats – which also was the state's **largest operating wind power plant**.
- In 2020, home to **two-thirds of Wyoming's total online and under construction wind power capacity**.





**For More  
Information**

[www.powercompanyofwyoming.com](http://www.powercompanyofwyoming.com)

[www.transwestexpress.net](http://www.transwestexpress.net)

